

# INDIVIDUAL STANDS, LCD, LED, ALU



**LIGHT STANDARD**

CAT. NO. 090

Tray dimensions: ANY  
Raw material: ANY  
Weight: XXX  
Paper label dimensions: XXX



**RING LIGHT**

CAT. NO. 093

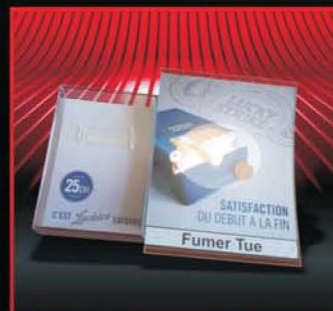
Tray dimensions: ANY  
Raw material: ANY  
Weight: XXX  
Paper label dimensions: XXX



**SQUARE LIGHT**

CAT. NO. 083

Tray dimensions: ANY  
Raw material: ANY  
Weight: XXX  
Paper label dimensions: XXX



**TWIN EXPO  
DE LUX LIGHT**

CAT. NO. 175

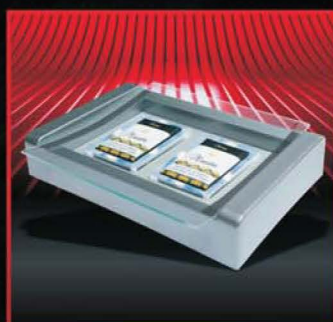
Tray dimensions: ANY  
Raw material: ANY  
Weight: XXX  
Paper label dimensions: XXX



**BOX EXPO  
DE LUX LIGHT**

CAT. NO. 196

Tray dimensions: ANY  
Raw material: ANY  
Weight: XXX  
Paper label dimensions: XXX



**LAGUNA 1 EXPO  
LIGHT**

CAT. NO. 124

Tray dimensions: ANY  
Raw material: ANY  
Weight: XXX  
Paper label dimensions: XXX



**LAGUNA 2 EXPO  
LIGHT**

CAT. NO. 153

Tray dimensions: ANY  
Raw material: ANY  
Weight: XXX  
Paper label dimensions: XXX



**EXCLUSIVE  
EXPO LIGHT**

CAT. NO. 063

Tray dimensions: ANY  
Raw material: ANY  
Weight: XXX  
Paper label dimensions: XXX

## GLASS CASH TRAYS



COUNTER 1 CAT. NO. 171

Tray dimensions: 175x175x18mm  
Raw material: GLASS  
Weight: 640g  
Paper label dimensions: 141x141mm



TOP GLASS 1 CAT. NO. 086

Tray dimensions: ø 180x20mm  
Raw material: GLASS  
Weight: 485g  
Paper label dimensions: ø 149mm



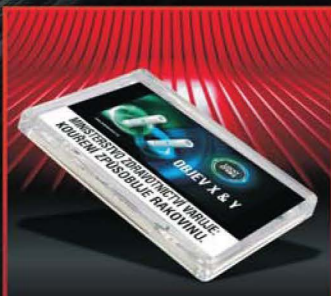
TOP GLASS 2 CAT. NO. 087

Tray dimensions: 179x129x20mm  
Raw material: GLASS  
Weight: 595g  
Paper label dimensions: 162x112mm



TOP GLASS 3 CAT. NO. 088

Tray dimensions: 150x150x20mm  
Raw material: GLASS  
Weight: 560g  
Paper label dimensions: 132x132mm



TOP GLASS 4 CAT. NO. 089

Tray dimensions: 179x129x20mm  
Raw material: GLASS  
Weight: 595g  
Paper label dimensions: 162x112mm



DIAMOND 180x180mm CAT. NO. 030

Tray dimensions: 180x180x28mm  
Raw material: GLASS  
Weight: 500g  
Bottom sticker dimensions: 179x179mm



DIAMOND 150x210mm CAT. NO. 028

Tray dimensions: 150x210x28mm  
Raw material: GLASS  
Weight: 470g  
Bottom sticker dimensions: 209x149mm



CRISTAL 180x180mm CAT. NO. 029-2

Tray dimensions: A 180x180x20mm/R20;  
B 180x180x20mm/R20  
Raw material: GLASS  
Weight: A-235g; B-250g  
Bottom sticker dimensions: 179x179mm



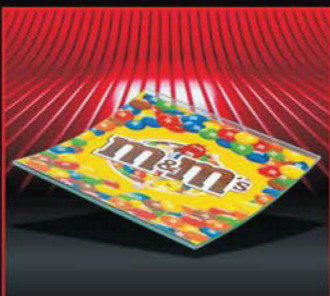
CRISTAL 150x210mm CAT. NO. 029-3

Tray dimensions: A 150x210x20/R20;  
B 150x210x20mm - 180x180x20mm/R20  
Raw material: GLASS  
Weight: A-230g; B-245g  
Bottom sticker dimensions: 149x209mm



CRISTAL 210x150mm CAT. NO. 029-4

Tray dimensions: A 210x150x20/R20;  
B 210x150x20mm - 180x180x20mm/R20  
Raw material: GLASS  
Weight: A-230g; B-245g  
Bottom sticker dimensions: 209x149mm



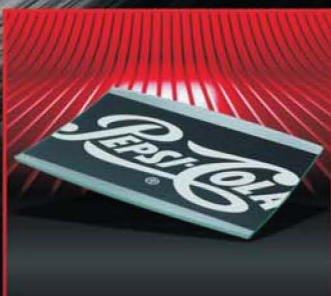
CRISTAL CLEAR 180x180mm CAT. NO. 029-6

Tray dimensions: 180x180x20mm/R20  
Raw material: GLASS  
Weight: 260g  
Paper label dimensions: 179x167mm



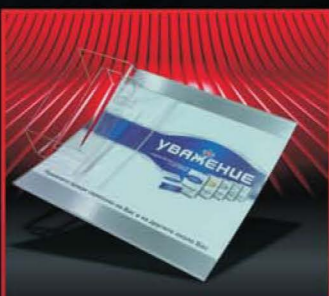
CRISTAL CLEAR 150x210mm CAT. NO. 029-7

Tray dimensions: 150x210x20mm/R20  
Raw material: GLASS  
Weight: 250g  
Paper label dimensions: 149x194mm



SILVER EXCLUSIVE (barrel) CAT. NO. 404

Tray dimensions: 200x180x20mm  
Raw material: GLASS  
Weight: 300g  
Paper label dimensions: 199x150mm



SILVER 180x180mm/150x210mm CAT. NO. 408

Tray dimensions: 180x180x20mm;  
150x210x20mm  
Raw material: GLASS  
Weight: 300g  
Paper label dimensions: 180x180mm/150x210mm

## PLASTIC AND GLASS CASH TRAYS



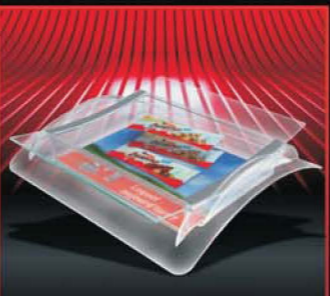
BOX EXPO DE LUX CAT. NO. 195

Tray dimensions: 235x225x45mm  
Raw material: POLYSTYRENE + GLASS  
Weight: 560g  
Paper label dimensions: 178x178mm



LAGUNA 1 EXPO CAT. NO. 023

Tray dimensions: 270x180x50mm  
Raw material: POLYSTYRENE + GLASS  
Weight: 530g  
Paper label dimensions: 198x138mm



LAGUNA 2 EXPO CAT. NO. 098

Tray dimensions: 280x235x50mm  
Raw material: POLYSTYRENE + GLASS  
Weight: 580g  
Paper label dimensions: 198x138mm



TWIN EXPO DE LUX CAT. NO. 168

Tray dimensions: 220x210x38mm  
Raw material: POLYSTYRENE + GLASS  
Weight: 370g  
Paper label dimensions: 110x198mm glass  
- replaceable label 118x159mm box



EXCLUSIVE EXPO GLASS CAT. NO. 068

Tray dimensions: 240x180x50mm  
Raw material: POLYSTYRENE + GLASS  
Weight: 520g  
Paper label dimensions: 187x127mm



RONDO FLAUT CAT. NO. 059

Tray dimensions: ø 170x23mm  
Raw material: POLYSTYRENE + GLASS  
Weight: 220g  
Paper label dimensions: ø 164mm



SURFER 1 CAT. NO. 051

Tray dimensions: ø 170x16mm  
Raw material: POLYSTYRENE + GLASS  
Weight: 195g  
Paper label dimensions: ø 158mm



SURFER 2 CAT. NO. 037

Tray dimensions: 210x121x23mm  
Raw material: POLYSTYRENE + GLASS  
Weight: 220g  
Paper label dimensions: 110x210mm



SURFER 3 CAT. NO. 049

Tray dimensions: 150x160x15mm  
Raw material: POLYSTYRENE + GLASS  
Weight: 220g  
Paper label dimensions: 149x150mm



FOCUS 1 CAT. NO. 058

Tray dimensions: ø 199x15mm  
Raw material: POLYSTYRENE + GLASS  
Weight: 305g  
Paper label dimensions: 129x129mm



FOCUS 2 CAT. NO. 060

Tray dimensions: 174x174x15mm  
Raw material: POLYSTYRENE + GLASS  
Weight: 285g  
Paper label dimensions: 129x129mm



RING BASE CAT. NO. 091

Tray dimensions: ø 210x18mm  
Raw material: POLYSTYRENE + GLASS  
Weight: flat glass - 205g; bent glass - 210g  
Paper label dimension: 111x165mm



SQUARE BASE CAT. NO. 081

Tray dimensions: 210x175x18mm  
Raw material: POLYSTYRENE + GLASS  
Weight: 260g  
Paper label dimensions: 180x180mm

## PLASTIC CASH TRAYS



MINI MAX CAT. NO. 012

Tray dimensions: 160x140x15mm  
Raw material: POLYSTYRENE  
Weight: 90g  
Paper label dimensions: 125x156mm



OPTIMA CAT. NO. 043

Tray dimensions: 205x170x20mm  
Raw material: POLYSTYRENE  
Weight: 185g  
Paper label dimensions: 155x153mm



KONTAKT CAT. NO. 045

Tray dimensions: 175x175x15mm  
Raw material: POLYSTYRENE  
Weight: 145g  
Paper label dimensions: 149x149mm



RONDO CAT. NO. 044

Tray dimensions: ø 175x24mm  
Raw material: POLYSTYRENE  
Weight: 150g  
Paper label dimensions: ø 164mm



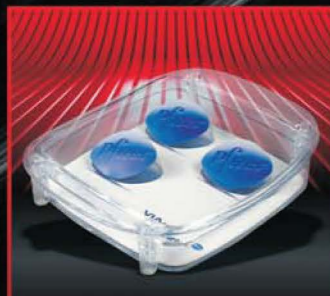
LAGUNA CAT. NO. 041

Tray dimensions: 200x170x40mm  
Raw material: POLYSTYRENE  
Weight: 190g  
Paper label dimensions: 158x132mm



PERFECT CAT. NO. 016

Tray dimensions: 174x174x22mm  
Raw material: POLYSTYRENE  
Weight: 225g  
Paper label dimensions: 154x154mm



OPTIMA EXPO CAT. NO. 056

Tray dimensions: 205x170x20mm  
Raw material: POLYSTYRENE  
Weight: 185g  
Paper label dimensions: 155x153mm



ELEGANCE PET CAT. NO. 042

Tray dimensions: 180x180x25mm  
Raw material: POLYSTYRENE  
Weight: 345g  
Paper label dimensions: 150x137mm



RONDO EXPO CAT. NO. 057

Tray dimensions: ø 170x50mm  
Raw material: POLYSTYRENE  
Weight: 185g  
Paper label dimensions: ø 164mm



EXCLUSIVE EXPO PS CAT. NO. 065

Tray dimensions: 240x180x50mm  
Raw material: POLYSTYRENE  
Weight: 350g  
Paper label dimensions: 187x127mm